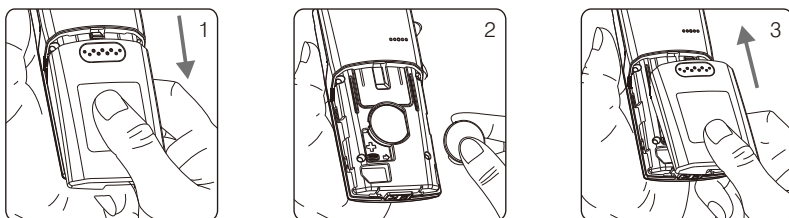


1 Battery Installation

- 1) Turn the meter over. Press and push battery cover to open.
- 2) Install the battery. Be sure to put battery in correct direction.
- 3) Slide the battery cover back until it snaps into place.

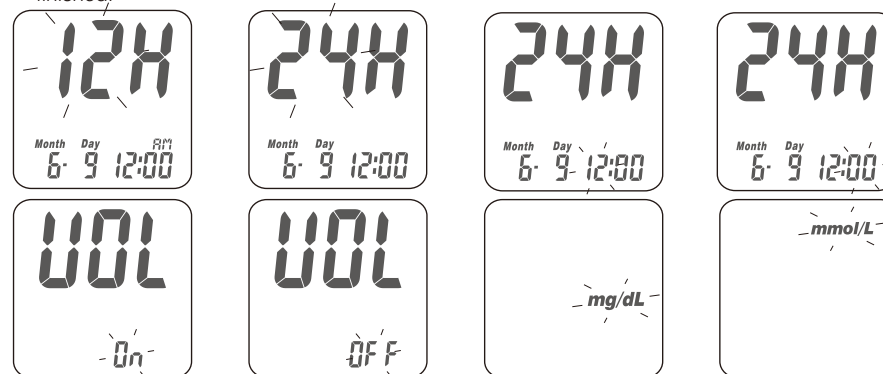


2 Setting Up Your Meter - Setting the Date, Volume and Time

- 1) Press and release main button "□" to turn on the meter.
- 2) Press and hold main button "□" for 7 seconds to activate the setting mode. The year will flash.
(NOTE: Prior to setting mode, the meter will turn off. Main button must remain pressed to access setting mode.)
- 3) Press up button or down button to change the year.
- 4) Press main button "□" to confirm the year and move to month setting.



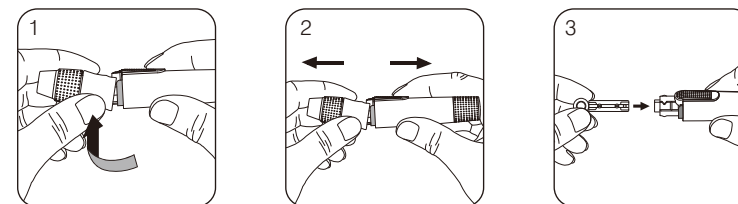
- 5) Repeat steps 3 and 4 to change the date, time format, hour, minute volume and unit of measurement. After pressing the main button to confirm the minute setting, your set-up is finished.






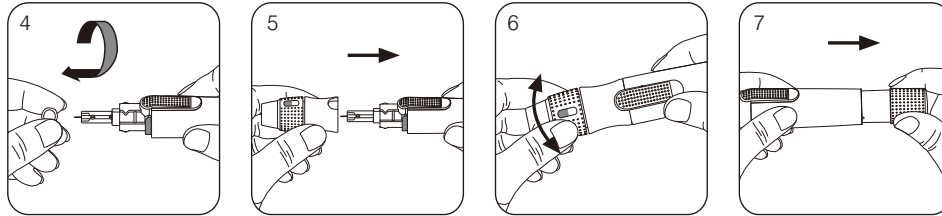
- NOTE**
- In order to ensure proper operation, do not to use this meter close to sources of strong electromagnetic radiation.
 - Keep meter free of dust and liquids including water.

3 Preparing the Lancing Device

- 1) Hold the depth adjustable cap in one hand and hold the hub in the other hand. Bend the cap towards the down side, until a gap appears between the cap and hub.
- 2) Pull the cap and hub off in opposite directions, remove the cap.
- 3) Insert a new disposable lancet firmly into lancet carrier.

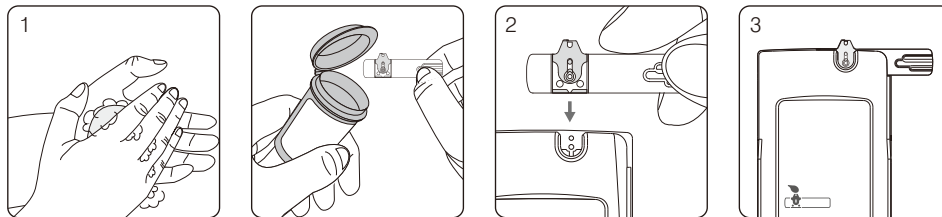


- 4) Twist off and set aside the protective cover of the disposable lancet.
- 5) Replace the depth adjustable cap.
- 6) Choose a depth of penetration by rotating the top portion of the depth adjustable cap until your desired setting depth is visible in the window. Settings are based on skin type:
 - "  " for soft or thin skin;
 - "  " for average skin;
 - "  " for thick or calloused skin.
- 7) Hold the hub in one hand and pull on the plunger with the other hand. The device will be cocked. Release the plunger and it will automatically move back to its original position near the hub.

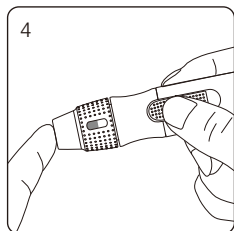


4 Performing a Test

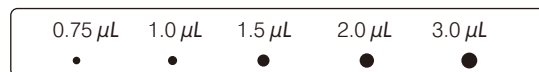
- 1) Wash and dry your hands. Take one strip from the vial. Close the vial cap immediately.
- 2) Insert the strip into the strip port on the meter with the indication symbol facing up. Push the strip in until it clicks and stops. The meter will automatically detect the code number.
- 3) When you see the flashing blood drop icon on the display window, hold the lancing device to the side of your fingertip and press the release button.



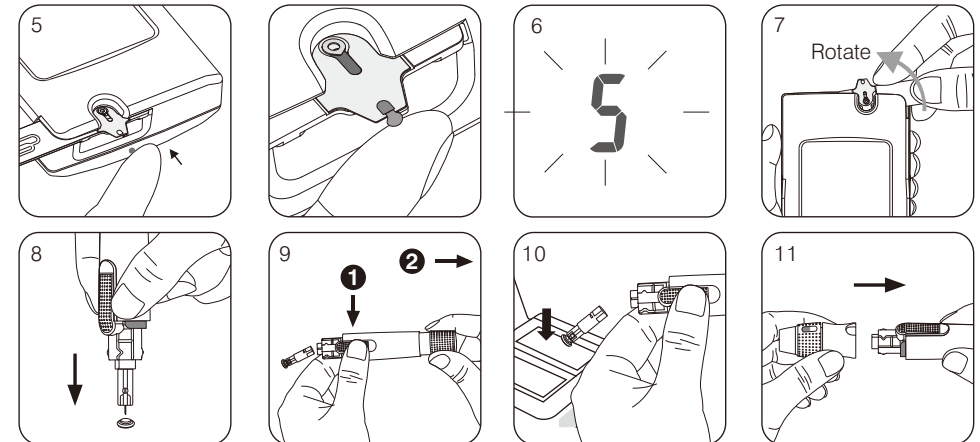
- 4) The meter only requires a small blood sample. A minimum of 0.75 μL of blood is needed to test. Blood sample size above 3.0 μL might contaminate the meter. Not enough blood (<0.75 μL) might cause inaccurate results.



4) Sample Size Example



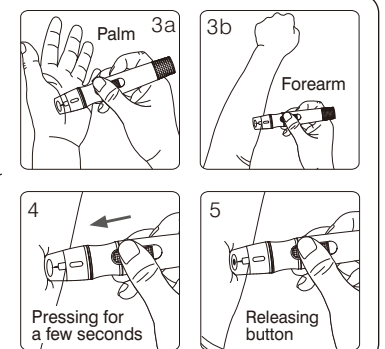
- 5) Touch and hold the drop to the edge of sample entry until you hear a "beep" and the view window is filled with blood. If the view window is not completely filled with blood the test will not start. Discard the test strip and repeat the test with a new test strip.
- 6) The countdown mode will begin on the display window. After 5 seconds, your test result will appear. For more information about your test results, please see your User Manual.



- 7) Remove the test strip from the meter. Please follow your local regulations to discard the used strip properly.
- 8) Pull off the depth adjustable cap. Without touching the used disposable lancet, insert the lancet tip into the protective cover.
- 9) Hold the release button in one hand and pull on the plunger with the other hand to safely eject the used disposable lancet.
- 10) Discard the used disposable lancet into an appropriate puncture-proof or biohazard container.
- 11) Replace the depth adjustable cap after finishing the test.

Alternative site testing: palm or forearm blood sampling

1. Choose the clear cap and follow step 1 through step 3 "Performing a Test".
2. Massage the puncture area of your palm or forearm for a few seconds.
3. Immediately after massaging the puncture area, press and hold the lancing device with the clear cap against your palm or forearm.
4. Press the release button.
5. Continue holding the lancing device against your palm or forearm and gradually increase pressure for a few seconds until the blood sample size is sufficient.
6. Follow step 8 to discard the used disposable lancet.



For more information on how to use your meter and understand your test results, please see the User's Manual.

BIONIME
 BIONIME CORPORATION
 No. 100, Sec. 2, Daqing St., South Dist.,
 Taichung City 40242, Taiwan
 Tel: +886 4 23692388
 Fax: +886 4 22617586
 http: //www.bionime.com
 E-mail: info@bionime.com

EC REP
 Bionime GmbH
 Tramstrasse 16
 9442 Berneck
 Switzerland
 Email: info@bionime.ch

Rev. Date: 2019-10



101-3GM555-XXX
 EN