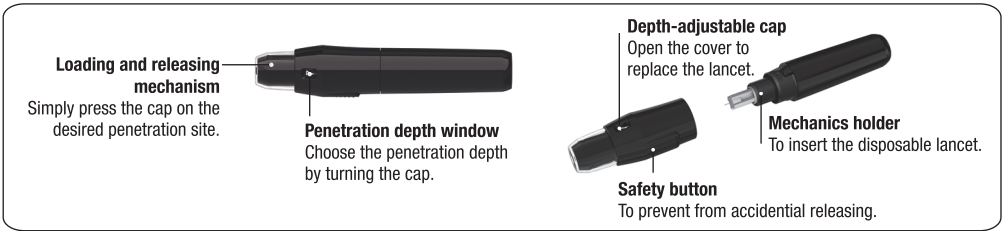
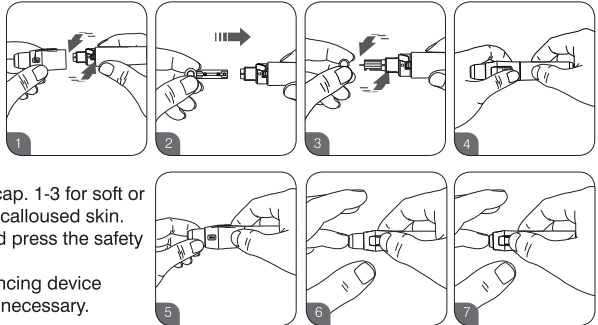


# Instructions for the *Rightest*<sup>™</sup> Lancing Device GD720



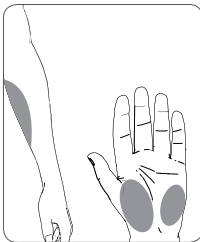
## Handling of the *Rightest*<sup>™</sup> Lancing Device GD720

1. Pull off the depth-adjustable cap.
2. Insert a new disposable lancet firmly into lancet carrier.
3. Twist off and set aside the protective cover of the disposable lancet.
4. Replace the depth-adjustable cap.
5. Choose the penetration depth by turning the cap. 1-3 for soft or thin skin; 4-5 for average skin; 6-7 for thick or calloused skin.
6. Place the finger against the lancing device and press the safety button.
7. Press your finger smoothly on the cap. The lancing device automatically loads and releases. No priming necessary.

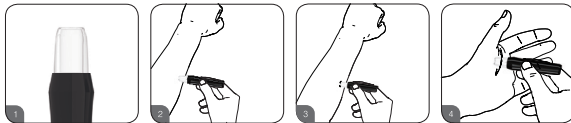


## Alternative site testing (AST)

The AST function can enable you to test the blood glucose on other sites than the fingertips and can benefit to avoid repeated pricking in the fingertips and reduces with pain.



1. Select the clear AST cap to perform a measurement on an alternative site testing.
2. Massage the puncture area of the palm or forearm for a few seconds and immediately after massaging the puncture area, press and release the lancing device with the clear cap against it.
3. Continue holding the lancing device against the puncture site, and gradually increase pressure for a few seconds until the blood sample size is sufficient.



- The blood glucose test results of blood samples taken from different sites may vary in certain conditions, such as rapid changes in glucose levels following a drink or a meal, an insulin dose or exercise. In these cases, only the fingertip should be used.
- DO NOT test on the palm or forearm if you are testing for hypoglycemia (low blood glucose) or hypoglycemia unawareness.
- Fingertip samples can show rapid changes of glucose faster than palm or forearm samples.
- As the blood flow taken from forearm or palm is slower than from the fingertip, we recommend using the lancing device with clear cap (AST cap) for testing at sites other than fingertip.

## BIONIME

 BIONIME CORPORATION  
No. 100, Sec. 2, Daqing St., South Dist.,  
Taichung City 40242, Taiwan  
Tel: 886-4-23692388 Fax: 886-4-22617586  
Email: info@bionime.com  
Website: www.bionime.com

EC REP

**Bionime GmbH**  
Tramstrasse 16, 9442 Berneck  
Switzerland  
E-mail: info@bionime.ch



101-3GD720-011  
EN