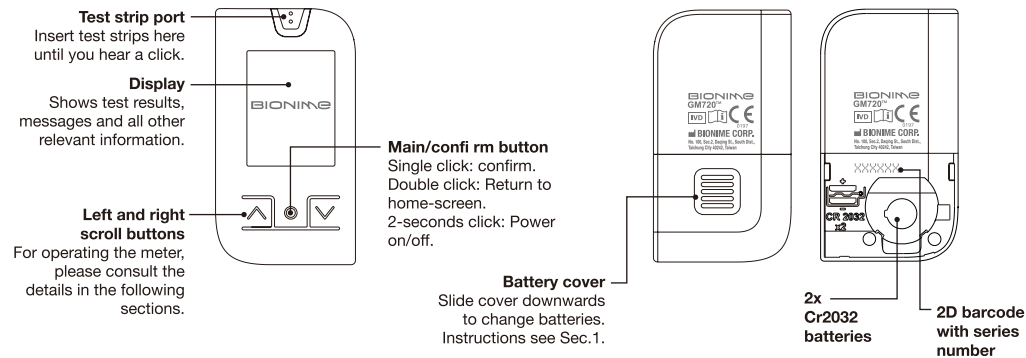
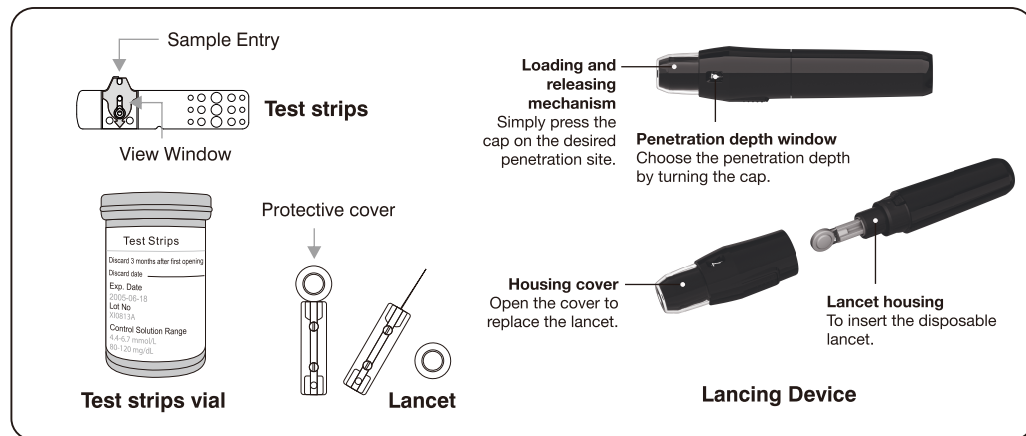


Rightest™ GM720 GETTING STARTED GUIDE (For self-testing)



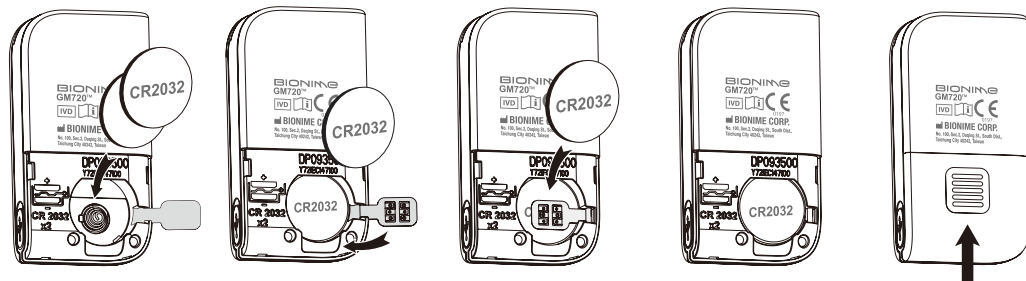
Front View of Meter

Back View of Meter



1 Batteries Installation

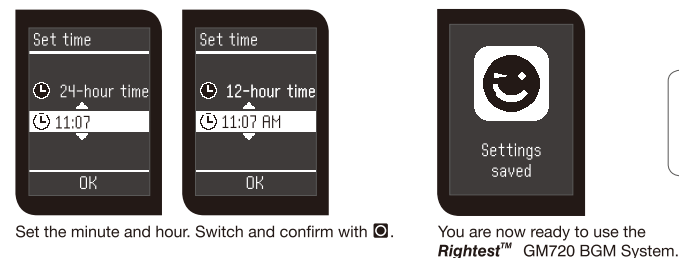
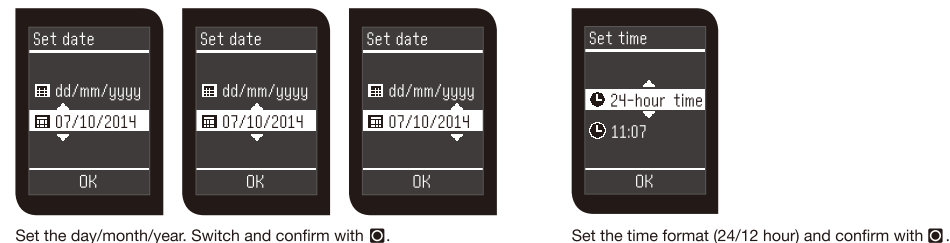
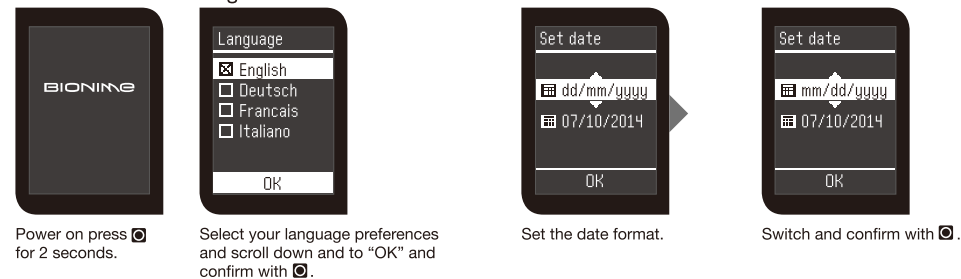
- 1) Install the first battery. Be sure to insert the battery the correct way with the + symbol up.
- 2) Close the contact flap and install the second battery.
- 3) Close the cover on the back side of the meter. Move the cover upwards.



2 Setting Up Your Meter - Setting the Date and Time

First start-up

Before you can use the **Rightest™** GM720 BGMS, you first need to pull out the battery isolation tap and make some settings.



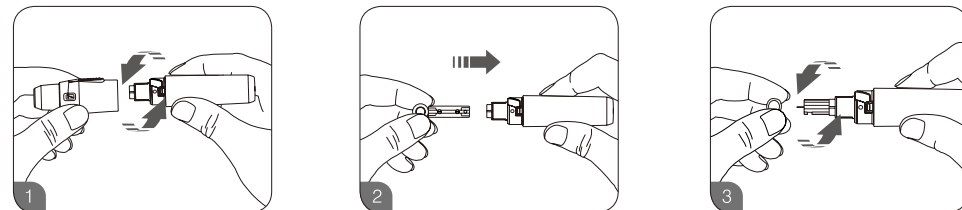
When changing batteries, the start-up procedure may be repeated.

NOTE

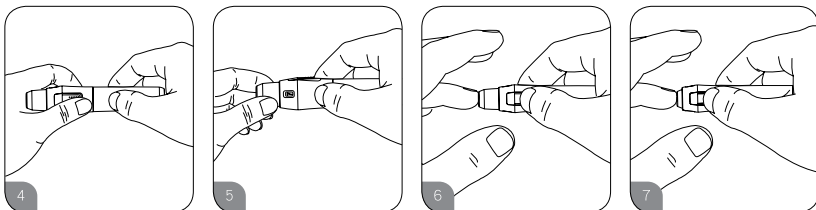
- Suggest not to use this meter close to source of strong electromagnetic radiation, to avoid interference with proper operation.
- Suggest to keep meter free of dust, water or any liquid.

3 Preparing the Lancing Device

- 1) Pull off the depth-adjustable cap.
- 2) Insert a new disposable lancet firmly into lancet carrier.
- 3) Twist off and set aside the protective cover of the disposable lancet.

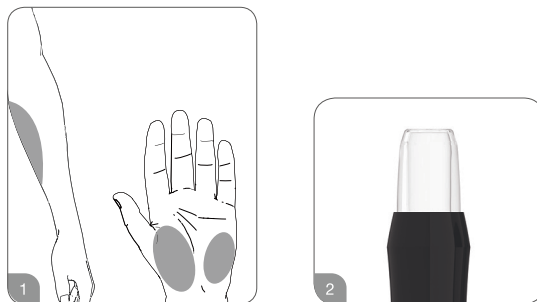


- 4) Replace the depth adjustable cap.
- 5) Place the finger against the lancing device.
- 6) Press the finger on the cap. The lancing device has an automatic loading and releasing function.
No priming necessary.



Alternative site testing (AST)

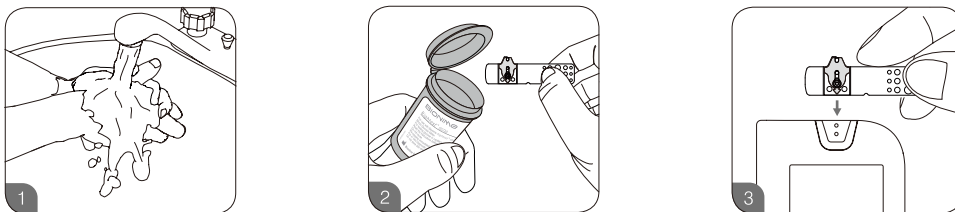
- 1) The AST function can provide to test the blood glucose on other sites than the fingertips and can benefit to avoid the repeated pricking in the fingertips and reduces the pain.
- 2) Select the clear AST-cap to perform a measurement on an alternative site testing.



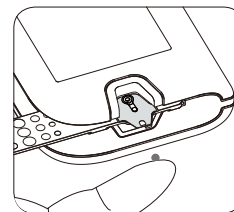
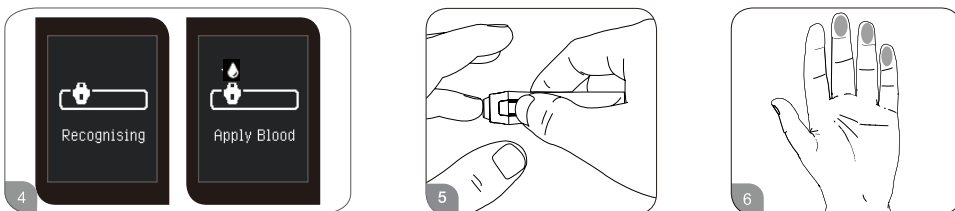
4 Performing a Test

Quick start – how to perform a blood glucose measurement

- 1) Wash and dry your hands.
- 2) Take one test strip from the vial and close the cap of the vial immediately.
- 3) Insert the test strip into the test strip port on the meter. The meter will automatically turn on.



- 4) After a short screen and recognizing check, the symbol “Apply Blood” will appear.
- 5) Place the finger against the lancing device and press the finger on the cap. The lancing device has an automatic loading and releasing function no priming necessary.
- 6) Recommended sites for obtaining blood.

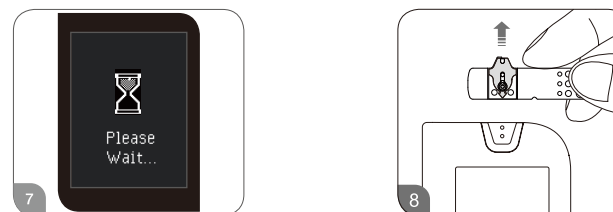


Gently squeeze your fingertip to get a drop of blood. Apply the blood drop on the edge of the test strip. When the view window is completely filled with blood, you will hear a beep (if the volume of the meter is switched on) and the measurement process starts. If the view window of the test strip is not completely filled with blood the measurement will not start. Discard the test strip and repeat the test with a new one.

The minimum blood sample size for testing is 0.7µL.

0.7µL	1.0µL	1.5µL	2.0µL	3.0µL	4.0µL
.	.	•	•	•	•

- 7) The “Please Wait” symbol will appear for 5 seconds before the test result is displayed. For further information about your test result, please consult your doctor.
- 8) Remove the test strip from the meter. Please follow your local regulations and discard the used test strip properly.



For more information on how to use your meter and understand your test results, please see the User Manual.

BIONIME

BIONIME CORPORATION
No. 100, Sec. 2, Daqing St., South Dist.,
Taichung City 40242, Taiwan
Tel: 886-4-23692388 Fax: 886-4-22617586
Email: info@bionime.com
Website: www.bionime.com

EC REP

Bionime GmbH
Tramstrasse 16, 9442 Berneck
Switzerland
Email: info@bionime.ch

CE
0197

101-3GM720-011
EN