

BIONIME CORPORATION

No. 100, Sec. 2, Daqing St., South Dist.,
Taichung City 40242, Taiwan
Tel: +886 4 23692388
Fax: +886 4 22617586
<http://www.bionime.com>
E-mail: info@bionime.com

EC REP

BIONIME GmbH

Tramstrasse 16, 9442 Berneck
Switzerland
E-mail: info@bionime.ch



Rev. Date: 2017-07

101-3GM700-0H1
EN

GM700

BIONIME

Rightest™ Blood Glucose Monitoring System GM700



USER'S MANUAL

Preface

Thank you for selecting the **Rightest™** Blood Glucose Monitoring System GM700. Please read this manual thoroughly before testing. This User Manual provides all the necessary information needed to obtain correct test results.

The **Rightest™** Blood Glucose Meter GM700 must only be used with **Rightest™** Blood Glucose Test Strip GS700 and **Rightest™** Control Solution GC700. The application of other Test Strips or control solutions can lead to inaccurate test results.

We hereafter call **Rightest™** Blood Glucose Monitoring System GM700 as **Rightest™** GM700 BGMS, **Rightest™** Blood Glucose Meter GM700 as **Rightest™** GM700 Meter, and **Rightest™** Blood Glucose Test Strip GS700 as **Rightest™** GS700 Test Strip for short.

It is recommended to monitor blood glucose regularly. By testing accurately and frequently, complications can be reduced. The **Rightest™** GM700 BGMS, combines simple instruction and design with accurate testing results to provide a more reliable, user-friendly diabetes management system.

Preface

The **Rightest™** Blood Glucose Monitoring System GM700 is intended for in vitro diagnostic use (outside the body only). It is to be used for self-testing in the home or professional, clinical use.

The system is used for monitoring of blood glucose levels. Venous, arterial, and neonatal blood testing is limited to healthcare professional use only.

Rightest™ GM700 Meters, Lancing Device, and Lancets are suggested to be used by personal monitoring blood glucose use at home, but not suggested by multiple users.

The testing result is calibrated to be plasma equivalent for test with fresh capillary, venous, arterial and neonatal whole blood samples. Capillary samples may be drawn from the fingertip, palm and forearm, and in the case of neonates, the heel. You may consult your healthcare professional for instructions on how to use the system correctly. Our customer support staff is available to assist you as well.

The **Rightest™** Blood Glucose Monitoring System GM700 is manufactured by Bionime Corporation. If you have any question or concern, please contact your local Bionime Customer Service or email to rightest@bionime.com.

Precaution

- Before using the **Rightest™** GM700 BGMS to test your blood glucose, read all the instructions in this user's manual and practice the tests including the quality control test. (Read all notes and precautions carefully)
- Please do the quality control test regularly to make sure the test results are accurate.
- The **Rightest™** GM700 Meter can only be used with **Rightest™** GS700 Test Strips. Other brands' test strips should not be used under any circumstances. The use of other brands' strips may give inaccurate results.
- The **Rightest™** BGMS GM700 is intended for in vitro diagnostic use only. The test results using fresh capillary whole blood samples from the fingertip, palm and forearm are calibrated to be equivalent to plasma testing.
- Venous, neonatal or arterial blood testing should be performed by by healthcare professionals.
- The **Rightest™** GM700 BGMS is intended for self-testing or professional use. It should not be used to diagnose diabetes mellitus.
- Wait to test at least 30 minutes after entering another location of a different ambient temperature.
- Pay attention to the environment protection policy when disposing of batteries.

Precaution

- Using appliance in tropical and / or temperate climate.
- Keep the test strips, control solution or vial cap away from children. They may cause a choking hazard. If a test strip or vial cap is swallowed, contact your physician immediately.
- Prevent water from entering the meter. Never immerse the meter or hold it under running water.
- The minimum blood sample size for testing is 0.75 μ L : (•)

Sample Size Example



- Use a minimum of 0,75 μ L to test blood glucose levels. Blood sample size above 3.0 μ L may contaminate the Auto-Code Key.
- Blood sample size below 0.75 μ L may result in Er4. In this case, repeat the test with a new test strip.
- A drop of blood is required to perform a blood glucose test. Capillary blood can be used, while venous, neonatal or arterial blood may also be used only if drawn by healthcare professionals.
 - The system has been tested with neonatal blood. As a matter of good clinical practice, be caution of the interpretation of neonate glucose value below 50 mg/dL (2.8 mmol/L). Please follow the recommendations for follow-up care that have been set by your intuition for critical glucose values in neonates. Once patient is suspected as rare disease (galactosemia), the glucose result should be based on laboratory test.

Table of Contents

About the Rightest™ Blood Glucose Monitoring System	
The Rightest™ Blood Glucose Monitoring System GM700	8
The Rightest™ GM700 Meter	10
The Rightest™ GS700 Test Strip	14
The Rightest™ GM700 Auto Code Key	16
Preparing to test	
Battery Installation	17
Setting Up the Meter	19
Turning On/Off the Meter	23
Function Screens and Button Operations	24
Handling the Rightest™ GS700 Test Strip	26
Testing Procedure	
Preparing for Testing	28
Performing a Blood Test	29
Alternative Site Testing (AST)	33
View Window appearance	35
Comprehending Test Results and Messages	36

Table of Contents

Quality Control	
About Quality Control Testing	37
Performing a Quality Control Test	40
Understanding Control Test Results	42
Recalling Test Results	43
Recalling Average Test Results	45
Caring for Your Meter	46
Error Messages and Trouble shooting	47
Limitations	51
Specifications	52
Warranty	54
Customer Service	55
Expected Values	56
Parts of Critical Component	57

The **Rightest™** Blood Glucose Monitoring System GM700

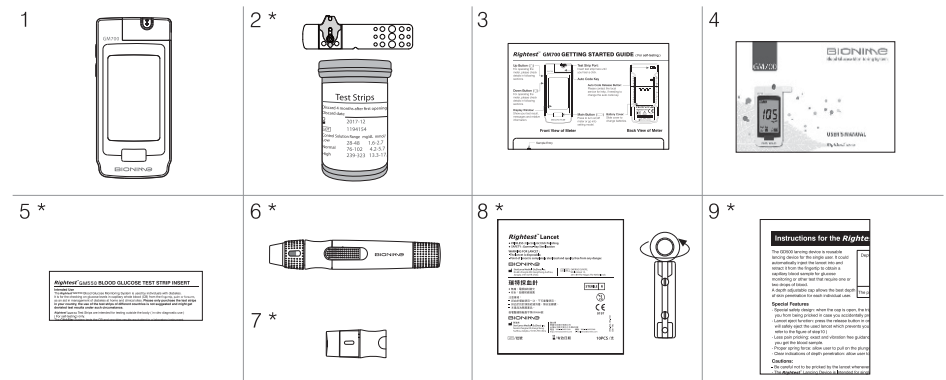
The **Rightest™** GM700 BGMS consists of several items. Please identify each item of the system and learn the name and function of each item.

These items are included in the **Rightest™** GM700 BGMS:

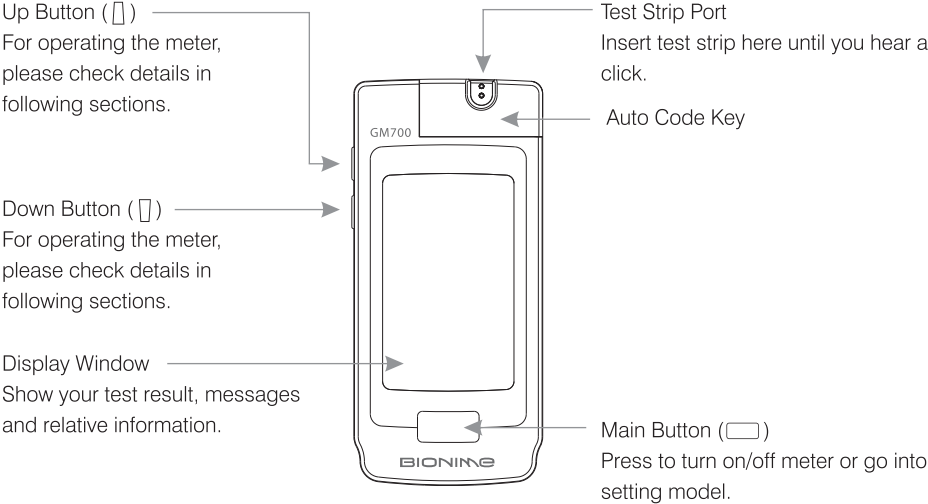
1. **Rightest™** GM700 Meter(with 1 CR2032 battery installed)
2. **Rightest™** GS700 Test Strips (0/10/25 pcs)*
3. **Rightest™** GM700 Getting Started Guide
4. **Rightest™** GM700 User Manual
5. **Rightest™** GS700 Test Strip Package Insert*
6. **Rightest™** GD500 Lancing Device*
7. Clear cap*
8. Disposable Sterile Lancets (10 pcs)*
9. Instructions for the lancing device*
10. **Rightest™** Control Solution GC700 Package insert (not shown)*
11. **Rightest™** Auto code key (combined on the meter)
12. **Rightest™** Control Solution GC700 (not shown)*
13. Carrying Case (not shown)*

(*Different packages have different bundled items. Some packages might not include * items.)

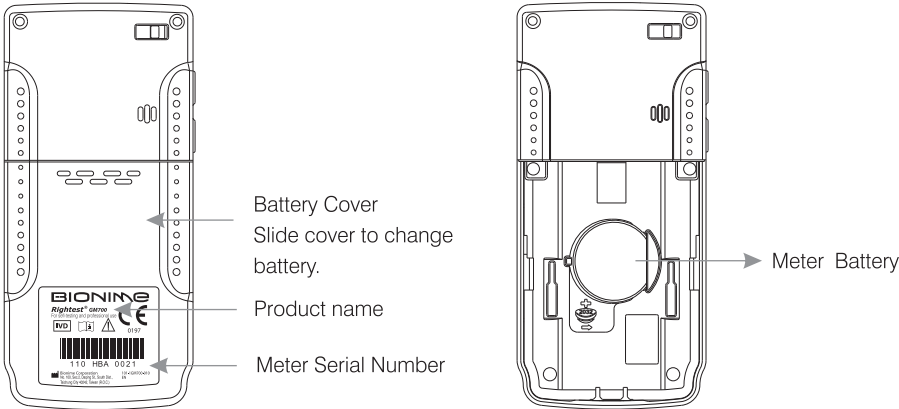
The **Rightest™** Blood Glucose Monitoring System GM700



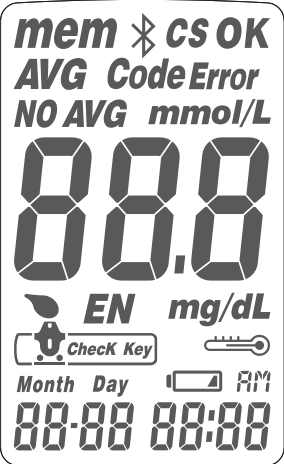
The Rightest™ GM700 Meter



The Rightest™ GM700 Meter



The Rightest™ GM700 Meter



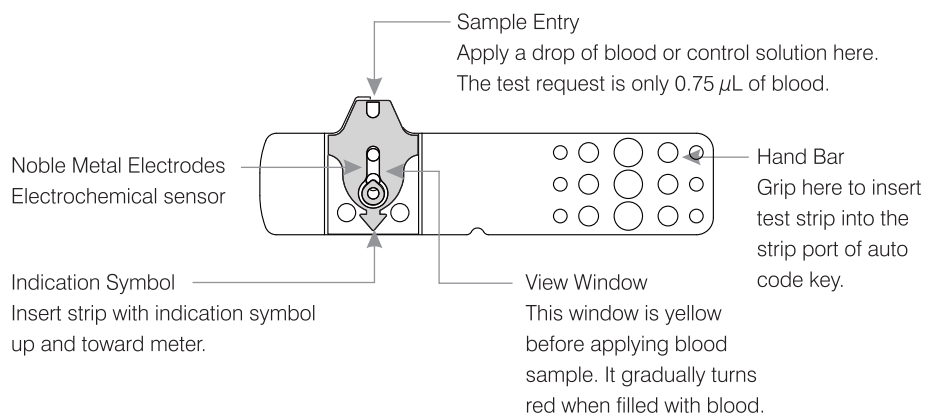
The Rightest™ GM700 Meter

mem	Indicates a test result stored in memory		Tell when to apply the blood sample
NO AVG	Indicates a test result, not joining into the Average function of this meter		Appears after you insert test strip into meter
AVG	Indicates with the average result	Error	Appears when an error occurs
CS	Indicates a control solution test result	Month Day 00:00	Current date under time mode or Testing date under memory mode
mmol/L mg/dL	Unit of test result		Indicates if the environmental temperature is exceeded during testing
00.0	Test result	AM	Indicates the time in 12H format
	Warns when the battery is low or must be replaced	00:00	Current time under time mode or Testing time under memory mode
OK EN Code Check Key Manufacturing use only			Transfer data via bluetooth

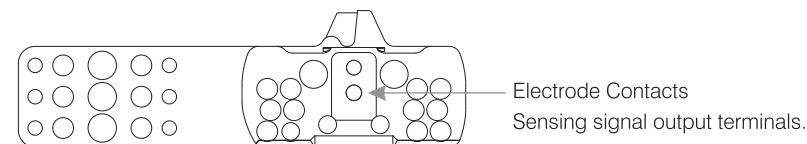
The **Rightest™** GS700 Test Strip

The **Rightest™** GM700 Meter must only be used with **Rightest™** GS700 Test Strips and **Rightest™** Control Solution GC700.

The application of other Test Strips or control solutions can lead to incorrect results.



The **Rightest™** GS700 Test Strip



PRECAUTION

- Re-cap the test strip vial immediately after taking out a test strip.
- Do not reuse test strips.
- Do not use expired test strips.
- Record the date of opening a new test strip vial for the first time. Discard the vial of test strips after 4 months from opening.
- Store the test strips in a cool (4-30 °C) and dry location (< 90 % relative humidity). Do not expose to direct sunlight or heat.
- For detailed information, please refer to the **Rightest™** GS700 Test Strip Package Insert.
- If the **Rightest™** GM700 meter and strips are exposed to a high temperature difference, please wait 30 minutes before measurement.
- Keep test strips and vial out of reach of children.


The **Rightest™** GM700 Auto Code Key

Auto Code Key is designed to automatically detect the Code of strip to make each lot of strips work well on the meter. Therefore, the Auto Code Key is not necessary to replace every time. Auto Code Key also contains the test strip port for inserting the test strip.

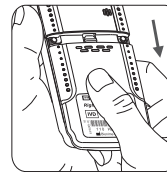
PRECAUTION

- If your auto code key is damaged or polluted, please contact your customer service to proceed exchanging and installation.
- Do not remove the auto code key until it is malfunctioned.

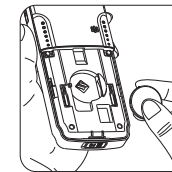
Battery Installation

The **Rightest™** GM700 meter kit comes with one CR2032, 3 volt, battery installed in the meter. New battery will provide power to perform approximately 1000 tests with normal use. The low battery symbol "  " will appear on meter display if your battery runs low. Replace the battery as soon as possible after the battery symbol appears.

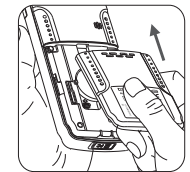
The meter will automatically turn off after 2 minutes of nonuse to save battery power. Your test memories are still saved.



1. Turn the meter over. Press and push battery cover to open.



2. Install the battery. Check to make sure battery is in the correct position.



3. Slide the battery cover back until it snaps into place.

Battery Installation

4. The meter will then do an electronic test immediately. The screen will begin flashing as soon as the battery is installed.
5. Press the Main button to close the electronic test of the meter, and enter the setting mode.
6. To set the time and date, see "Setting Up the Meter" chapter.



PRECAUTION

- Check to ensure the batteries are properly installed to decrease the danger of explosion.
- Replace only with the same or equivalent type of battery.
- Please follow the local regulation and discard a used battery properly.

Setting Up the Meter

You can enter the setting mode by below two ways:

1. Reload battery

After removing the battery, please press the main button for several times until no signal on screen, then follow the battery installation steps to load battery. The meter will do self test. Press the main button to exit the electronic test and enter Setting Mode.

2. With Battery inserted

Press the main button first to turn on the meter. Then press and hold the main button for 7 seconds (the meter will be turned off during this period, please keep pressing) until you hear a beep, indicating you have successfully entered Setting Mode. The display screen will show setting data.



NOTE

- When you keep pressing the main button for 3 seconds, the display on screen will turn off. Please don't care it. Keep pressing the main button till entering setting data.
- Quick press the main button allows you to change setting. However, if you want to return to the time mode, you need to go through all the settings first by pressing quickly the main button.

Setting Up the Meter

1. Year setting

With the year format blinking, press the Up or Down button until the current year appears. Then press the Main button to confirm it and move to Month setting.



2. Month setting

With the month blinking, press the Up or Down button until the current month appears. Then press the Main button to confirm it and move to Day setting.



3. Day setting

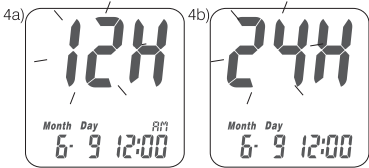
With the day blinking, press the Up or Down button until the current day appears. Then press the Main button to confirm it and move to Time format setting.



Setting Up the Meter

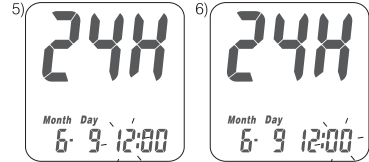
4. Time format 12/24H selection

With the time format blinking, press the Up or Down button to adjust it. Then press the Main button to confirm it and move to hour setting.



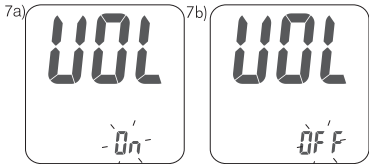
5. Hour setting

With the hour blinking, press the Up or Down button until the current hour appears. Then press the Main button to confirm it and move to minute setting.



6. Minute setting

With the minute blinking, press the Up or Down button until current minute appears. Then press the Main button to confirm it and move to volume setting.



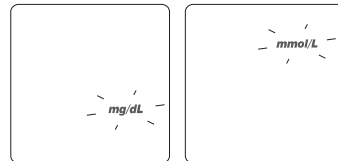
7. Volume setting

With the volume blinking, press the Up or Down button to turn it on or off. Then press the Main button to confirm and move to measurement of unit setting.

Setting Up the Meter

8. Setting the Unit of Measurement

With milligrams per deciliter (mg/dL) or millimoles per liter (mmol/L) blinking, press the Up or Down button to switch. Then press the Main button to confirm it and finish the settings.



9. Ending setting

After measurement of unit setting, for confirmation you will hear a beep (if volume is turned on). All the settings are saved and completed and will return to time screen. (If Volume is turned off, the display will directly return to time screen without a sound of "beep".)



NOTE

- When you do not do any settings of meter for over 2 minutes, the meter will leave setting mode and power off automatically.
- Your **Rightest™** GM700 Meter is ready to use at the first time. The meter default is set according to your local preference.

Turning On/Off the Meter

1. How to turn on the Meter

Press the Main button or Insert a test strip.

2. Manual Power off


If you want to turn off the meter, please keep pressing the Main button for 3 seconds.

3. Auto Power off

The meter will power off automatically if you don't operate it over 2 minutes.

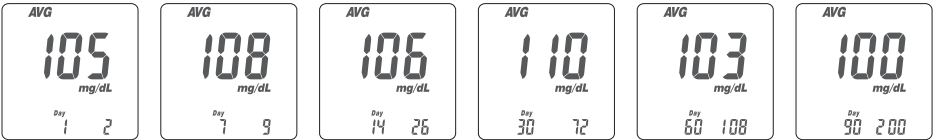
Function Screens and Button Operations

Switching the Function Screens

1. Press the " " button to switch function screens including Memory, Average and Time in sequence.



2. Under the Memory function, press Up or Down button to search for stored testing data.
3. Under the Average function, press Up or Down button to search for average data of 1-day, 7-days, 14-days, 30-days, 60-days, and 90-days.



Function Screens and Button Operations

4. Non-Averaging set and canceled:

You may select the unwanted or doubtful test results, to exclude them from the average calculation, after your every test.

After you finished your test in the test mode, you can exclude the unwanted result. Keep pressing the Down button until you see the symbol "NO AVG" in the top left corner of the screen. By keeping the Down button pressed and pressing the Main button simultaneously to confirm the value as "Non average". Now this value is flagged by the symbol "NO AVG" in the upper left corner of the screen.

If you want to cancel this non-averaging setting, you have to stay in the test mode. First keep pressing the Down button until the "NO AVG" symbol changes to "AVG" in the upper left corner of the screen. To confirm this original status, you again simultaneously press the main button to confirm the "AVG" status. Now the value will be stored as a regular value and included in the average values.

5. QUICK Searching:

If you want to see all values automatically displayed in sequence, first enter the memory mode. Then keep pressing the Up or Down button for 2 seconds. (Up button is for searching the tests the latest value to the oldest one; by using the Down button you can scroll from the oldest to the latest one). Anytime you want to stop, just release the pressed button. It will stop and display the current displayed value. You can use this way to find a particular reading you want to check.

Handling The *Rightest*[™] GS700 Test Strip

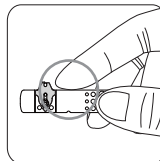
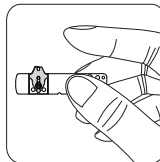
Inserting the Test Strip:

1. Hold the test strip between thumb and middle finger with the indication symbol facing upright.
2. Put the forefinger on the side of the test strip as shown.

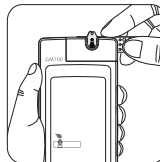


NOTE

This is the most effective way to insert the strip.



3. Insert the test strip into the test strip port until it snaps firmly into place.



Handling The *Rightest*[™] GS700 Test Strip

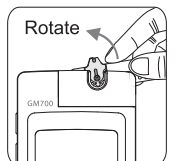
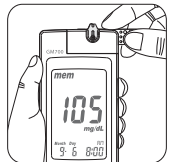
Removing the test strip:

1. Hold the test strip in the same position as inserted.
2. Rotate the test strip counterclockwise and pull up at the same time.



NOTE

Pulling the test strip in a counterclockwise direction will easily remove the test strip from the meter.

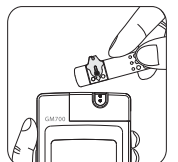


3. Take the test strip completely out of test strip port. Follow local regulations and discard the used test strip accordingly.



NOTE

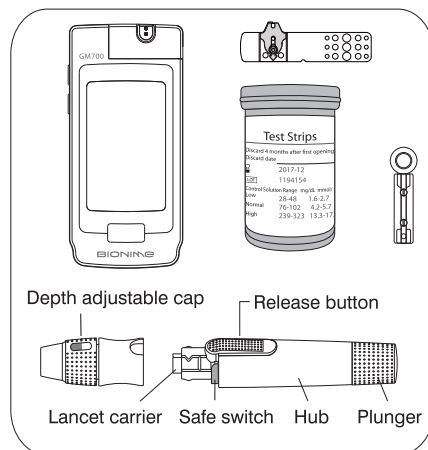
If directions are followed properly, the auto code key will not be contaminated by the blood sample.



Preparing for Testing

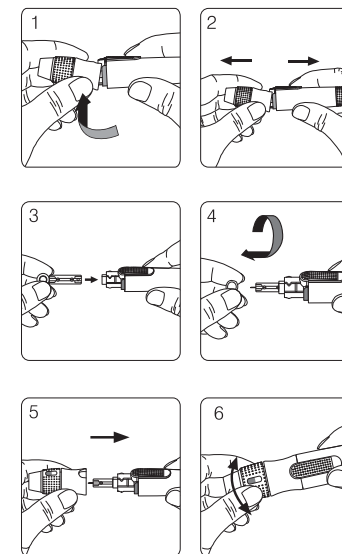
Before Performing a Blood Glucose test, prepare the items below:

- **Rightest™** GM700 Meter
(with **Rightest™** GM700 Auto Code Key installed)
- **Rightest™** GS700 Test Strips.
(Check the expiration date on the vial. Do not use expired test strips.)
- Approved Lancing Device
- Sterile Lancet
- Alcohol Swab (optional)



Performing a Blood Test

1. Hold the depth adjustable cap in one hand and hold the hub in the other hand. Bend the cap towards the down side. When a gap appears between the cap and hub, pull them off in opposite directions.
2. Pull off the depth adjustable cap.
3. Insert a new disposable lancet firmly into lancet carrier.
4. Twist off and set aside the protective cover of the disposable lancet.
5. Replace the depth adjustable cap.
6. Choose a depth of penetration by rotating the top portion of the depth adjustable cap until the setting depth matches the window. Settings are based on skin type
 - " " for soft or thin skin;
 - " " for average skin;
 - " " for thick or calloused skin.



Performing a Blood Test

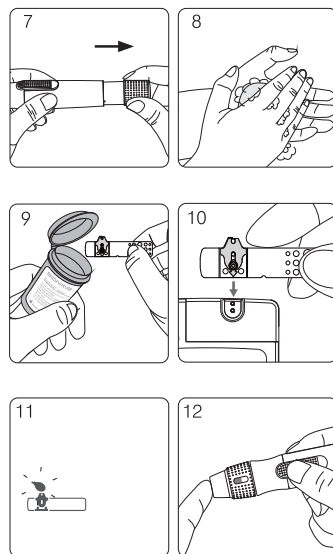
7. Hold the hub in one hand and pull on the plunger in the other hand. The device will be cocked. Release the plunger, it will automatically move back to its original position near the hub.
8. Wash your hands with warm soapy water and dry thoroughly.
9. Take one strip from the vial. Re-cap the vial cap immediately.
10. Insert the strip into the strip port of the meter with the indication symbol facing up. The meter confirms the insertion of the strip with a beep (if volume is turned on).



NOTE

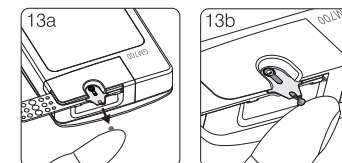
The meter will automatically detect Code number on strip. You don't have to check the Code number on the meter display and strip vial.

11. A blood drop symbol appears and is accompanied by a further beep (if volume is turned on). Now you can apply the blood sample within 2 minutes.
12. Place the lancing device against your fingertip and press the release button.

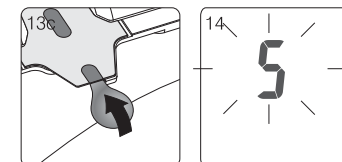


Performing a Blood Test

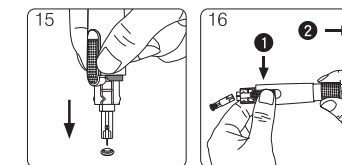
13. Touch and hold the drop to the edge of sample entry until you hear a "beep" (if volume is turned on) and the View Window is totally filled with blood. If the View Window is not totally filled with blood or the test does not start, please discard the test strip and repeat the test with a new test strip.



14. You will see the countdown mode on the screen. After 5 seconds, the test result appears.
15. Pull off the depth adjustable cap. Without touching the used disposable lancet, stick the lancet tip into the protective cover.

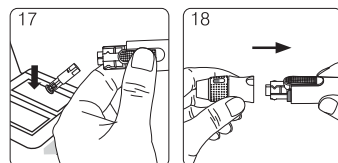


16. Holding the release button in one hand (see picture 16, step 1) and pulling on the plunger in the other hand (see picture 16, step 2) will safely eject the used disposable lancet.



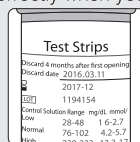
Performing a Blood Test

17. Discard the used disposable lancet into an appropriate puncture-proof or biohazard container.
18. Replace the depth adjustable cap after finishing the test.



⚠ PRECAUTION

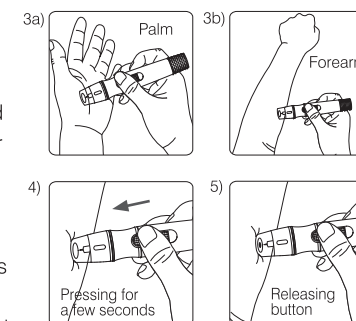
- Do not apply your blood drop to the sample entry on the strip until you see the " " appear. The meter is performing an internal test and will display " " and " **Error** " if you apply blood too soon. Please repeat the test with a new test strip.
- Record the date of opening a new test strip vial for the first time. Discard the vial of test strips after 4 months from opening.
- Always keep the metal contact points of the test strip entry point clean. If any dust or impurities are present, please clean with a small soft brush, otherwise the meter may not work correctly when you insert a test strip.
- Keep the Auto Code Key dry and clean. If excessive sample is obtained, clean the Auto Code Key immediately to prevent contamination.
- Pose the finger and the test strip in a comfortable position.
- Follow local regulations and discard the used test strip and lancet properly.



Alternative Site Testing (AST)

Alternative site testing-palm or forearm blood sampling

1. Choose Clear Cap and follow step 1~5 on page 29.
2. Massage the puncture area of palm or forearm for a few seconds.
3. Immediately after massaging the puncture area, press and hold the lancing device with the Clear Cap against palm or forearm.
4. Then press the release button.
5. Continue holding the lancing device against palm or forearm and gradually increase pressure for a few seconds until the blood sample size is sufficient.
6. Follow step 9~18 on page 30~32 to complete the test and discard the used disposable lancet.



Alternative Site Testing (AST)

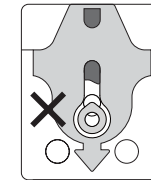


PRECAUTION

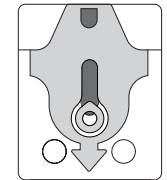
- DO NOT test on the palm or forearm if you are testing for hypoglycemia (Low blood glucose).
- Fingertip samples can show the rapid change of glucose faster than palm or forearm samples.
- As the blood flow taken from forearm is slower than fingertip or palm, we recommend using the **Rightest™** GD500 lancing device with Clear Cap for testing sites other than fingertip.

View Window appearance

Make sure your blood sample covers the whole area of the View Window to get an accurate test result. An insufficient blood sample will result in an error message ("Er4"). If this occurs, repeat the test with a new test strip.



Insufficient blood sample

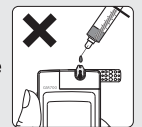


Enough blood sample



PRECAUTION

- Check the expiration date printed on the strip vial every time you use a test strip. Do not use expired test strips.
- Use each test strip immediately after removing from the vial.
- Do not reuse test strips.
- Apply the blood drop only on the sample entry of the test strip.
- Please don't drip or inject the blood sample directly by syringe to the sample entry of test strip. Doing this might contaminate the meter or cause damages and is not recommended.



Comprehending Test Results and Messages

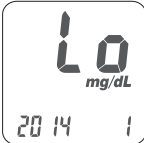
The **Rightest™** GM700 Meter displays results between 10 and 600 mg/dL (0.6 and 33.3 mmol/L).

If the test result is below 10 mg/dL (0.6 mmol/L), “**Lo**” will appear on the screen. Please repeat your test with by a new test strip.

If you still get “**Lo**” result, you should immediately contact your healthcare professional.

If the test result is above 600 mg/dL (33.3 mmol/L), “**Hi**” will appear on the screen. Please repeat your test with a new test strip.

If you still get “**Hi**” result, you should immediately contact your healthcare professional.



NOTE

- If your blood glucose result is unusually high or low, or if you question your testing results, repeat the test with a new test strip. You can also run a Quality Control Test to check your meter and test strip. If the test result still remains unusually high or low, contact your healthcare professional immediately.
- If you are experiencing symptoms that are not consistent with your blood glucose test results and you have made sure to follow all instructions of this manual, contact your healthcare professional immediately.

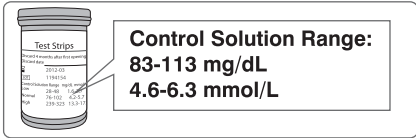
About Quality Control Testing

What is a Quality Control Test?

To ensure proper monitoring function, it is necessary to perform quality control test.

Please use Control Solution tested with **Rightest™** GM700 BGMS under Control Solution Mode. If the test result is within the Control Solution Range printed on the strip vial label, the **Rightest™** GM700 BGMS passes Quality Control Test. That means your **Rightest™** GM700 BGMS is working correctly.

Control Solution Range:



Example of Control Solution Range printed on your test strip vial label.

NOTE

If you want to purchase new control solutions, please contact your authorized Bionime representative.

About Quality Control Testing

When should a Quality Control Test Be Performed?

- Whenever checking if the system is working properly.
- Whenever practicing testing and checking correct procedure.

Required Items for Quality Control Tests

To perform a quality control test, prepare the items below:

- **Rightest™** GM700 Meter (with Auto Code Key installed)
- **Rightest™** GS700 Test Strips
- **Rightest™** Control Solution GC700

About Quality Control Testing



PRECAUTION

- Each time you open a new bottle of Control Solution, write the discard date on the label. Control Solution is good for 3 months after opening the bottle, or until the expiration date printed on the label, whichever comes first.

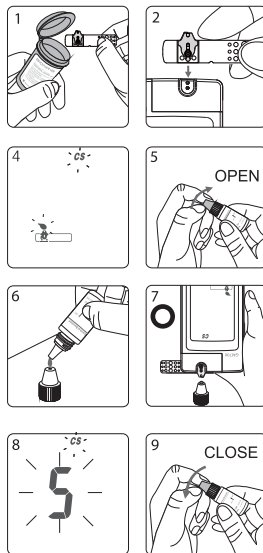
Example



- Wipe the vial cap with a clean tissue before tightly capping the vial of control solution.
- Replace the vial cap of control solution and close tightly immediately after using.
- Check the expiration date before you use the control solution.
(Refer to Control Solution Package Insert.)
- Keep Control Solution and vials out of reach of children.

Performing a Quality Control Test

1. Take one test strip from vial and Re-cap the vial cap immediately.
2. Insert the test strip with view window, facing up, into test strip port.
3. While the blood drop symbol flashing, press and hold the main button for over 3 seconds until the "CS" symbol appears.
4. You will see blinking "☹" and "CS" symbol on the screen, prompting you to apply the corresponding level Control Solution.
5. Shake the bottle of Control Solution well before opening the cap. Then open the bottle and put the cap on the table.
6. Drip a drop of Control Solution on the top of the cap.
7. Gently touch sample entry of the strip with the Control Solution on the top of the cap.
8. When you hear a beep (if volume is turned on) please wait for the test result. The screen will display the countdown number from 5.
9. Tightly replace the cap on the Control Solution bottle.
10. The Control Solution result appears. Compare your Quality Control Test result to the Control Solution Range printed on the test strip vial label.



Performing a Quality Control Test

⚠ PRECAUTION

- Your Control Solution results will not be calculated for average reading but still can be recalled. The Control Solution Test result will be shown with "CS" symbol on the screen.
- Our suggestion environment for Control Solution Test is 6~44 °C.
- Before "☹" and "CS" appears, please don't touch the Control Solution to the sample entry on strip because the meter is still in an internal check. If you do so, the meter will show "☹" and "Error" accompanied by beeps (if volume is turned on)
- Don't drip the Control Solution to sample entry of the strip directly. The reagent on strip might be sucked into the bottle of Control Solution and might cause the degeneration of Control Solution. Doing this might contaminate the meter via the test strip port as well.
- Keep the Auto Code Key clean and dry. Clean immediately if the Auto Code Key gets stained or is overly exposed to moisture.
- Don't touch the tip of the control solution bottle. If you have touched it, please clean up with water.



Understanding Control Test Results

Your control solution test results should fall within the control solution range. If the results are within the range, the **Rightest™** GM700 BGMS is working correctly.

If control solution test results are out of control solution range, the **Rightest™** GM700 BGMS may not be working properly.

Repeat the quality control test. If your control solution results outside the range still exist, do not use the **Rightest™** GM700 BGMS to test blood glucose and contact your Bionime Customer service.

Possible reasons the control solution results are out of the range:

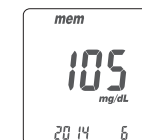
- Your test strip has expired.
- You left the cap of the test strip vial opened or the control solution off for a long time.
- You didn't perform the test procedure correctly.
- Malfunction of the meter or the test strip.

Recalling Test Results

The **Rightest™** GM700 Meter is able to store 1,000 test results with time and date automatically. If your meter has stored 1,000 results, which is the maximum memory of the meter, the newest test result will replace the oldest one.

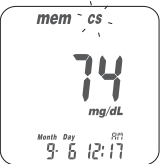
To recall your test memory, start the meter without test strip inserted.

1. Press the Main button to switch the screen to memory function. The last test result will appear with the number "1".
2. On the memory screen, use either Up or Down button on the side to review all previous results with date and time. Results display from the most recent (Sequence no. "1") to the oldest (Sequence no. "1000") at the lower right hand corner of the screen.



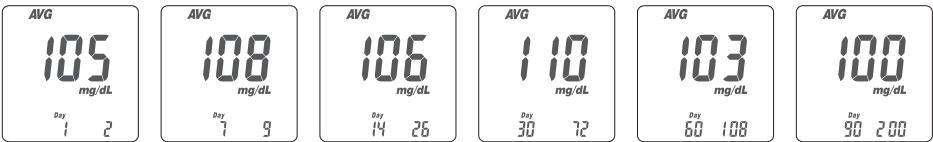
Recalling Test Results

3. The quality control solution test result can be recalled from the saved data. When the data with "CS" appears, the test was performed using the control solution. The control solution test result will not be used for average calculation.



Recalling Average Test Results

The **Rightest™** GM700 meter provides several average test results. View the 1-day, 7-days, 14-days, 30-days, 60-days and 90-days average of test results for better blood monitoring of blood monitoring of blood glucose.



1. Press the main button to switch the screen to average function.
2. On the average screen, use either the Up or Down button for the option of 1-day, 7-days, 14-days, 30-days, 60-days and 90-days average of test results.
3. The number shown on the lower right hand corner indicates how many test results have been calculated.
4. The "Lo", "Hi" results, the control solution results, the non-average test results and are not calculated in the average.



PRECAUTION

- Set the time and date to activate the average function.

Caring for Your Meter

Maintenance

Keep your meter and test strip free of dust, water or any other liquid. Store the meter in the carrying case for protection. If meter is dropped or damaged, perform a quality control test with the control solution before doing a blood glucose test.

Cleaning Meter

Clean the outside of the meter with a damp cloth and mild soap/detergent. Keep the test strip port of auto code key from getting wet.

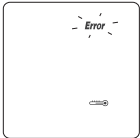
Cleaning Auto Code Key

If your Auto Code Key is stained with blood, control solution or any liquid, please use a dry tissue or alcohol swab to clean it up immediately. Do not use any thing wet to clean it. Perform a quality control test to ensure the system is working properly.

Error Messages and Trouble Shooting

Temperature Error

1. In order to get accurate testing, please do testing between 6~44 °C (43~111 °F).
2. When moving from the area with temperature outside the operating range of test strip to another area with temperature within operating range of test strip, wait for 30 minutes before testing.
3. When the temperature is below 6 °C (43 °F) or over 44 °C (111 °F), the meter cannot function and the " **Error** " symbol will blink.
Move the meter to environment with temperature between 6~44 °C (43~111 °F) and redo the test after waiting 30 minutes.



Error Messages and Trouble Shooting

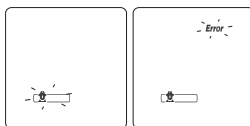
Battery Error

1. The "🔋" symbol is blinking when the battery power is low. The test can still be performed, but the battery needs to be changed as soon as possible.
2. The "🔋" and "Error" symbols are blinking when the battery is too low. Meter cannot function when the power is at this level. Change the battery immediately.



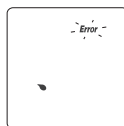
Strip Error

1. When the test strip is inserted incorrectly, the meter will beep 4 times while the "🔋" symbol flashes. Do not apply a sample on the test strip. Please re-insert the unused test strip correctly (refer to "Handling the **Rightest™** GS700 Test Strip" on Page 26 for more information).
2. If, after performing the required steps, the "🔋" and flashing "Error" symbols appear on the screen, it means the **Rightest™** GS700 Test strip has been inserted incorrectly more than twice. Please, re-insert the unused test strip again after reviewing the steps on how to insert a test strip correctly on page 26 or call Customer Service for support. This error message can also indicate that you may have used the wrong test strips. Please check the test strip vial to ensure you are using the **Rightest™** GS700 Test strips.



Sampling Error

Please don't apply the blood drop to the sample entry of the strip before the meter displays. If you do so, the meter will display "🔋" and "Error" accompanied by beeps (if volume is turned on). Please discard the test strip and repeat the test with a new test strip.



Error Messages and Trouble Shooting

Er1 - The inserted test strip has been used or damaged. Please use a new test strip from vial.

Er2 - Meter has malfunctioned. Do the Quality Control Test or reinstall the battery to check if the meter works properly.

Er3 - Signal transmission is disrupted, repeat the test with a new test strip.

Er4 - Applied blood volume is insufficient, please repeat the test with a new test strip.

Er5 - An issue calibrating the Meter has occurred. Please follow the steps below:

1. Remove the test strip from the meter.
2. Turn off the meter (press and hold the Main button for 3 seconds).
3. Press the main button to turn ON the meter.

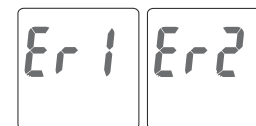
If after turning on the Meter, you do not see Er5, your meter is functioning properly and able to perform a test.

If one of the above error messages still appears, please contact Bionime Customer Service.

Meter Malfunction

If the meter cannot be started, please follow the steps below:

1. Open the battery cover, remove the battery.
 2. Wait for 5 minutes and insert the battery as described "Meter activation and Battery change".
- The meter should be working normally after finishing above steps. If not, please contact your local Bionime Customer Service.



Error Messages and Trouble Shooting


CAUTION

A blood sample should ONLY be applied to the test strip after the test strip has been inserted correctly and the Meter's screen is showing the image of the test strip and a blood drop flashing symbol. If the blood drop flashing symbol is NOT showing on the screen, do not apply a sample to the test strip. Please re-insert the unused test strip correctly. The screen MUST show the image of the test strip accompanied by the blood drop symbol flashing (this symbol take 3 seconds to show after correctly inserting the test strip) in order for a sample to be applied. Please consult your User Manual and/or contact Customer Service for support on how to correctly insert a **Rightest™** GS700 Test strip.

Limitations

- **Rightest™** GM700 BGMS is not intended for serum or plasma test.
- Severe dehydration may cause inaccurately low results.
- Inaccurate test results may be obtained at high altitude more than about 3,048 meters (10,000 feet) above sea level.
- The glucose test may be invalid in the presence of abnormally high concentration:
 - Ascorbic acid \geq 5 mg/dL (0.28 mmol/L)
 - Uric acid \geq 20 mg/dL (1.19 mmol/L)
 - Xylose \geq 20 mg/dL (1.33 mmol/L)
- Do not use this meter close to strong electromagnetic radiation sources, in order to avoid interference with normal operation.
- Keep the meter free of dust, water or any liquid.

Specification

Measurement Technology	Dehydrogenase Electrochemical Sensor
Sample	Capillary, Venous, Arterial and Neonatal Whole Blood
Minimum Sample Volume	0.75 μ L (microliters)
Measuring Range	10-600 mg/dL (0.6-33.3 mmol/L)
Test Time	5 seconds
Memory Capacity	1,000 blood glucose test results with date and time
Power Saving	Turn off automatically after 2 minutes no use Press the "  " button for 3 seconds.
Operating Temperature	6 ~ 44°C (43 ~ 111°F)
Operating Relative Humidity	10 - 90 %

Specification

Hematocrit	20~70 % when blood gluucose \leq 200 mg/dL (11.1 mmol/L), 20~60 % when blood gluucose > 200 mg/dL (11.1 mmol/L)
Power Supply	One CR2032 Battery
Battery Life	About 1,000 tests
Meter Dimension	96 mm x 46 mm x 17.5 mm
Meter Weight	57.5 \pm 5 g with battery
Monitor	LCD display
Display Area	52.6 mm x 32.0 mm
Meter Storage Conditions	-10 ~ 60 °C (14 ~ 140 °F)
Test Strip Storage Conditions	4 ~ 30 °C (39 ~ 86 °F), < 90 % relative humidity

Warranty

Bionime Corporation warrants that your **Rightest™** GM700 Meter will be free from defects in materials and workmanship for five years from the date of purchase.

This warranty does not apply to the performance of a **Rightest™** GM700 Meter that has been altered, misused, tampered with or abused in any way.

This warranty applies only to the original purchaser of the meter.

Please complete and return the enclosed warranty card to Bionime authorized representative.

Different models have different specifications. Some of the models are not included with the warranty card.












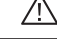

**NOTE**

During blood glucose measurement, the **Rightest™** GM700 Meter itself may come into contact with blood. Used **Rightest™** GM700 Meter therefore carry a risk of infection. Please dispose of your used **Rightest™** GM700 Meter after removing the battery-according to the regulations applicable in your country. For information about correct disposal, please contact your local council and authority.

Customer Service

We sincerely like to provide complete, considerate services to our customers. Please review all the instructions to make sure you are performing the steps correctly. If you have any questions or concerns, please contact your Bionime authorized representative or email to rightest@bionime.com. We will make every effort to provide assistance and solutions for you.

Description of used symbols

	For in vitro diagnostic use		WEEE		Manufacturer
	Consult the instruction for use				Expiry date
	Temperature limitation				For single use only
	CE-mark (with No. of notified body)				EC Representative
	Method of sterilization using irradiation				Lot number
	Caution (consult instructions for use and warnings)				Biological risks

Expected Values

Fasting Blood Glucose	
GLUCOSE LEVEL	INDICATION
From 70 to 99 mg/dL (3.9 to 5.5 mmol/L)	Normal fasting glucose
From 100 to 125 mg/dL (5.6 to 6.9 mmol/L)	Pre-diabetes (Impaired fasting glucose)
126 mg/dL (7.0 mmol/L) and above on more than one testing occasion	Diabetes

References

1) Diabetes Information - American Association for Clinical Chemistry (AACC) (Electronic Version)
Retrieved Dec 21, 2015 from
www.labtestsonline.org/understanding/analytes/glucose/test.html

Parts of Critical Component

- Blood Glucose Meter, Test Strip and Control Solution**
Manufacturer: Bionime Corporation
No. 100, Sec. 2, Daqing St., South Dist., Taichung City 40242, Taiwan
Product complied with In Vitro Diagnostic Medical Device Directive 98/79/EC (CE 0197)
EC-Rep: Bionime GmbH, Tramstrasse 16, 9442 Berneck , Switzerland
E-mail: info@bionime.ch
- Lancing Device**
Manufacturer: Bionime Corporation
No. 100, Sec. 2, Daqing St., South Dist., Taichung City 40242, Taiwan
Product complied with Medical Device Directive 93/42/EEC
EC-Rep: Bionime GmbH, Tramstrasse 16, 9442 Berneck , Switzerland
E-mail: info@bionime.ch
- Disposable Sterile Lancets**
Manufacturer: SteriLance Medical (SuZhou) Inc.
No.68 LiTangHe RD, XiangCheng, SuZhou, JiangSu 215133, P.R. China
Product complied with Medical Device Directive 93/42/EEC (CE 0197)
EC- Rep: EMERGO EUROPE, Molenstraat 15, 2513 BH The Hague, The Netherlands