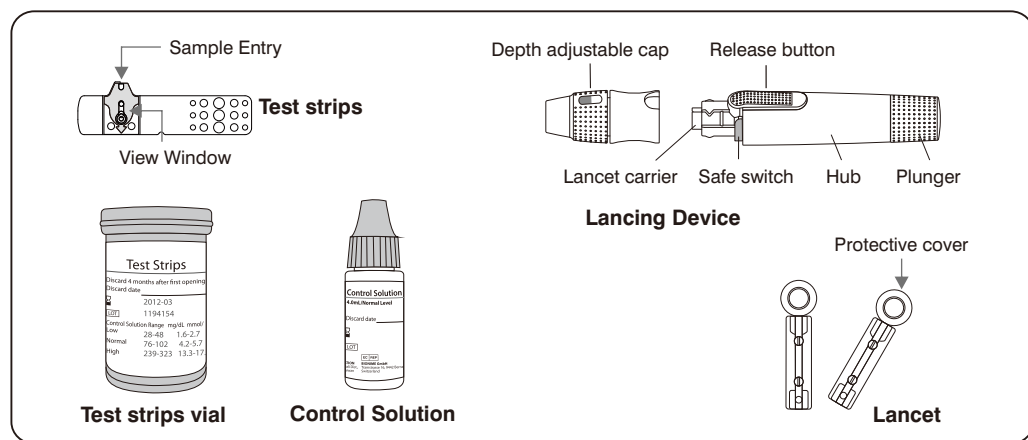
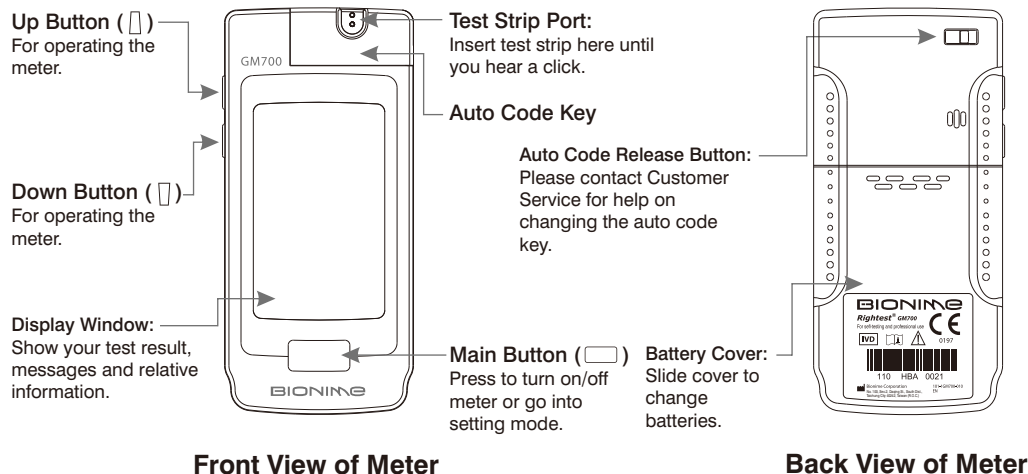
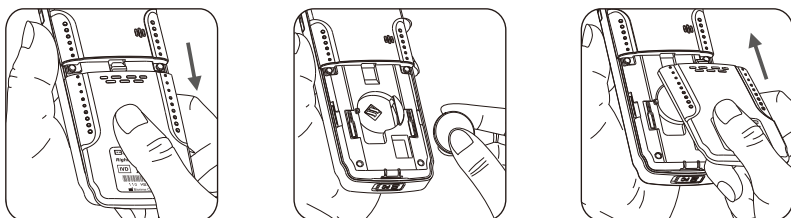


Rightest™ Blood Glucose Meter GM700 Getting Started Guide (For self-testing)



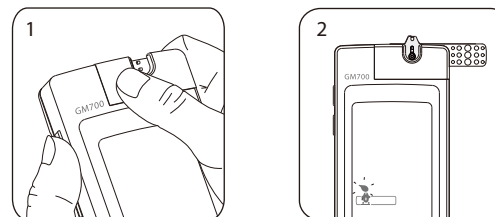
1 Battery Installation

- 1) Turn the meter over. Press and push battery cover to open.
- 2) Install the battery. Be sure to put battery in correct direction.
- 3) Slide the battery cover back until it snaps into place.



2 Auto Code Key

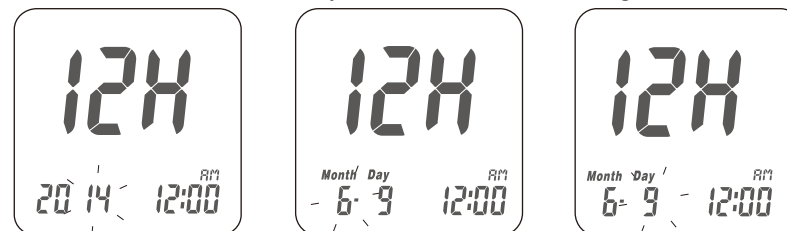
Auto code key allows auto-coding. The meter can automatically detect the code number on the strip, and therefore, there is no need to change the code key unless there is a malfunctioned.



NOTE
- Please contact the Customer Service for help, if needing to change the auto code key.

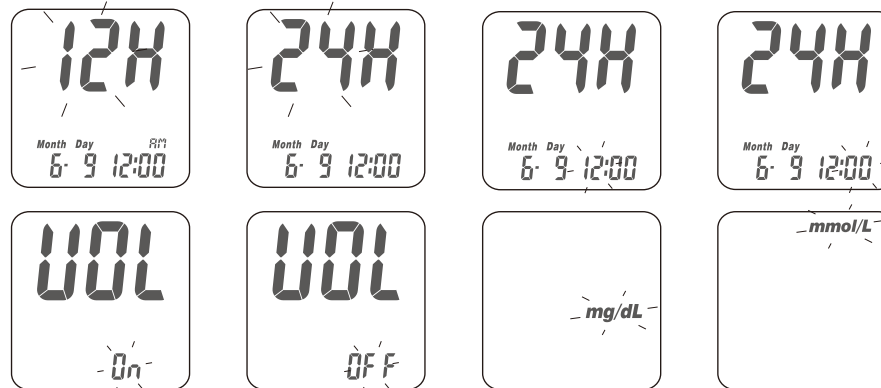
3 Setting Up Your Meter - Set the Date, Time, Volume and Measurement Unit

- 1) Press and release main button "⬅" to turn on the Meter.
- 2) Press and hold main button "⬅" for seven seconds until you go into the setting mode. Before you go into setting mode, you will see power off first. Please keep pressing it until you go into the setting mode. The year will flash.
- 3) Press up button "⬆" or down button "⬇" to change the year.
- 4) Press main button "⬅" to confirm the year and move to month setting.



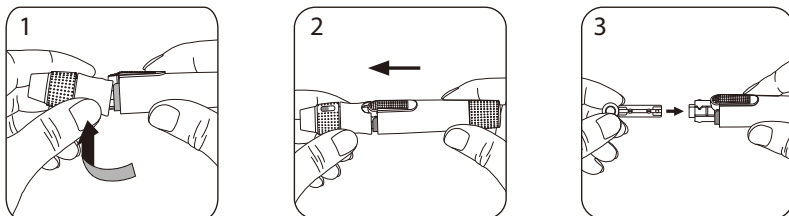
- 5) Repeat steps 3 and 4 to change the date, time format, hour, minute, volume and measurement unit.

After pressing the main button to confirm the measurement unit, your set-up has been finished.

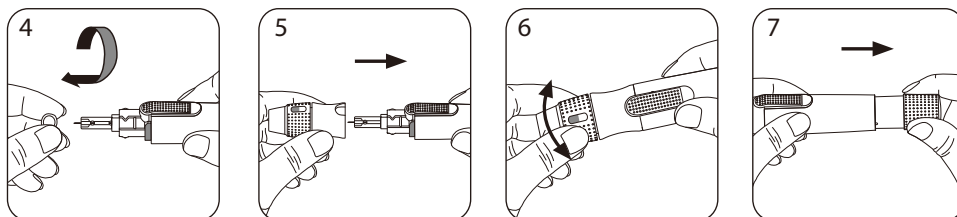


4 > Preparing the Lancing Device

- 1) Hold the adjustable cap in one hand and hold the hub in the other hand. Bend the cap towards the down side. When a gap appears between the cap and hub, pull them off in opposite directions.
- 2) Pull off the depth adjustable cap.
- 3) Insert a new disposable lancet firmly into lancet carrier.

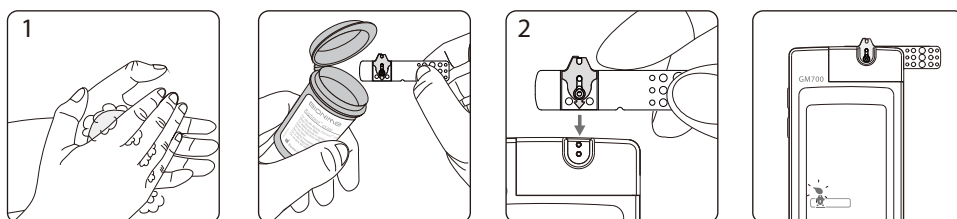


- 4) Twist off and set aside the protective cover of the disposable lancet.
- 5) Replace the depth adjustable cap.
- 6) Choose a depth of penetration by rotating the top portion of the depth adjustable cap until the setting depth matches the window. Settings are based on skin type:
 "□" for soft or thin skin;
 "▤" for average skin;
 "▥" for thick or calloused skin.
- 7) Hold the hub in one hand and pull on the plunger in the other hand. The device will be cocked. Release the plunger, it will automatically move back to its original position near the hub.

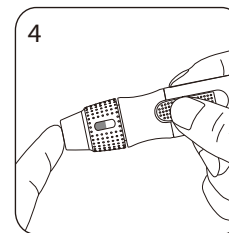


5 > Performing a Test

- 1) Wash and dry your hands. Take one strip from the vial. Close the vial cap immediately.
- 2) Insert the strip into the strip port on meter with the indication symbol facing up. Push the strip in until it clicks and stops. The meter will automatically detect code number.
- 3) When you see the flashing blood drop, hold the lancing device to side of your fingertip and press the release button.



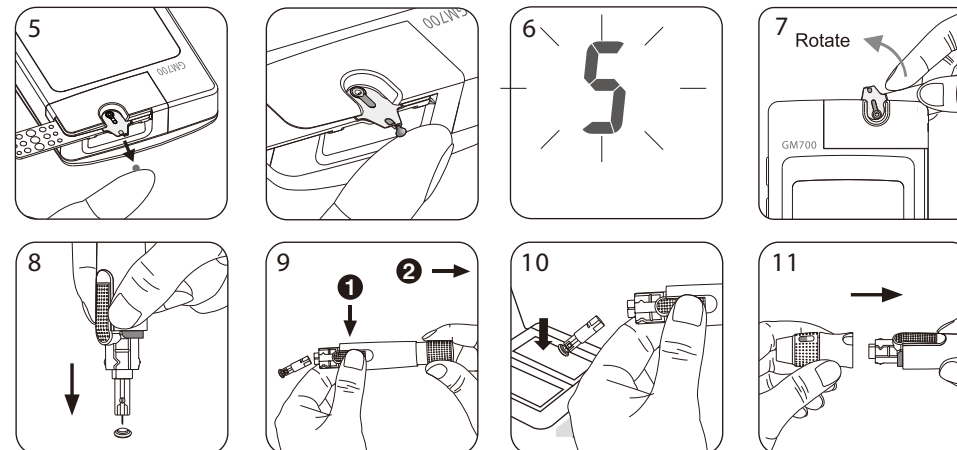
- 4) The Meter only needs a tiny blood sample. Please take a minimum of $0.75\mu\text{L}$ to do the test on blood glucose monitoring system. Blood sample size above $3.0\mu\text{L}$ might contaminate the meter. Not enough blood ($<0.75\mu\text{L}$) might cause inaccurate result.



Sample Size Example



- 5) Touch and hold the drop to the edge of sample entry until you hear a "beep" and the view window is totally filled with blood. If the view window is not totally filled with blood, the test might not start. Then discard the test strip and repeat the test with a new test strip.
- 6) You will see the countdown mode on the screen. After 5 seconds, the test result appears. For more information, please check your User Manual for details.
- 7) Remove the test strip from meter. Please follow the local regulation and discard the used strip properly.



- 8) Pull off the depth adjustable cap. Without touching the used disposable lancet, stick the lancet tip into the protective cover.
- 9) Hold the release button in one hand and pull on the plunger in the other hand will safely eject the used disposable lancet.
- 10) Discard the used disposable lancet into an appropriate puncture-proof or biohazard container.
- 11) Replace the depth adjustable cap after finishing the test.

For more information on how to use your meter and understand your test results, please see the User Manual.

BIONIME

BIONIME CORPORATION
 No. 100, Sec. 2, Daqing St., South Dist.,
 Taichung City 40242, Taiwan
 Tel: +886 4 23692388
 Fax: +886 4 22617586
 Email: info@bionime.com
 Website: www.bionime.com

EC REP

Bionime GmbH
 Tramstrasse 16
 9442 Berneck
 Switzerland
 E-mail: info@bionime.ch

CE
 0197

101-3GM700-011
 EN
 Rev. Date : February/2014