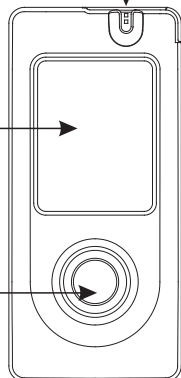


RIGHTEST™ ELSA Blood Glucose Meter Getting Started Guide (For self-testing and professional use)

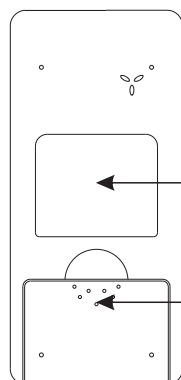
Test Strip Port
Insert test strips here.

Display Window
Shows your test result, messages and other information.

Main Button
Used to operate the meter. Please see the following sections for further details.



Front View of Meter



Back View of Meter

Meter Label

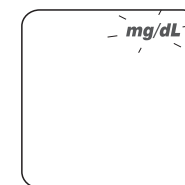
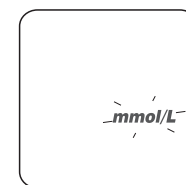
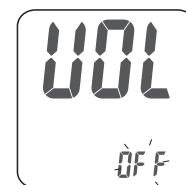
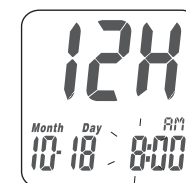
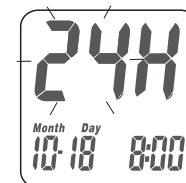
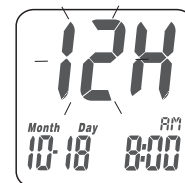
Battery Cover
Slide off to change the battery.

2 Setting Up Your Meter - Setting the Date, Time and Test Unit

- 1) Press and release the main button "⊙" to turn on the Meter.
- 2) Press and hold the main button "⊙" for 7 seconds until you enter the Settings mode. Note that the meter will first turn off before entering the Settings mode. Continue holding the main button until the Settings mode appears.
- 3) With the year blinking, tap the main button "⊙" to scroll to the next number.
- 4) Press and hold the main button "⊙" to confirm the year and move to the next setting.



- 5) Repeat steps 3 and 4 to set the date, time format, hour, minute, volume, and test unit (*According to regulations in different countries/regions, the unit may be fixed at mg/dL or mmol/L and cannot be changed. In this case, the option to change the unit will not be displayed).

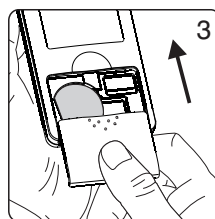
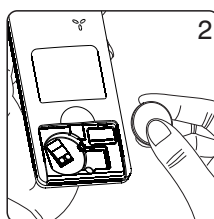
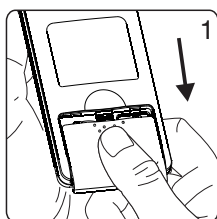


NOTE

- Do not use this meter close to sources of strong electromagnetic radiation to prevent interference with proper operation.
- Keep the meter free of dust, water and any other liquids.

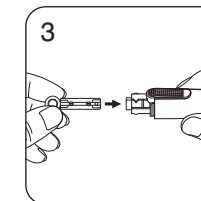
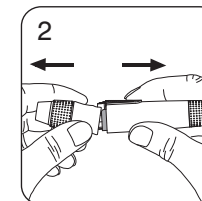
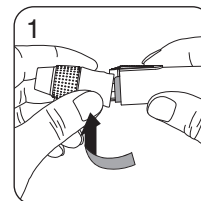
1 Battery Installation




- 1) Turn the meter over. Press and slide down the battery cover to open it.
- 2) Install the battery. Make sure the battery is inserted the correct way up.
- 3) Slide the battery cover back on until it snaps into place.

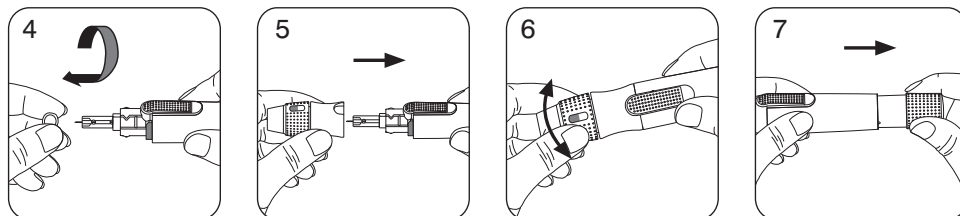


3 Preparing the Lancing Device

- 1) Hold the depth adjustable cap with one hand and hold the hub with the other. Bend the device and apply pressure at the joint until it gently pops open.
- 2) Pull apart both ends to separate the cap from the hub.
- 3) Push a new disposable lancet into the lancet carrier. Make sure it is held securely in place.

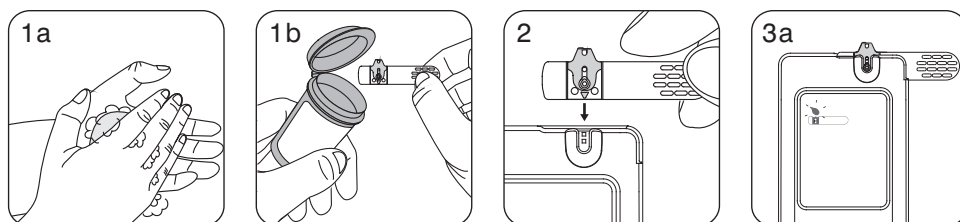


- 4) Twist off and set aside the protective cover of the disposable lancet.
- 5) Reattach the depth adjustable cap.
- 6) Rotate the clear top part of the cap to adjust the depth. Check the number of lines visible in the viewing window. More lines corresponds to a greater depth. Try
 - " for soft or thin skin,
 - " for average skin, or
 - " for thick or calloused skin.
- 7) Pull back the plunger until you hear a click. The device is now primed. Let go of the plunger. It will return to its original position.

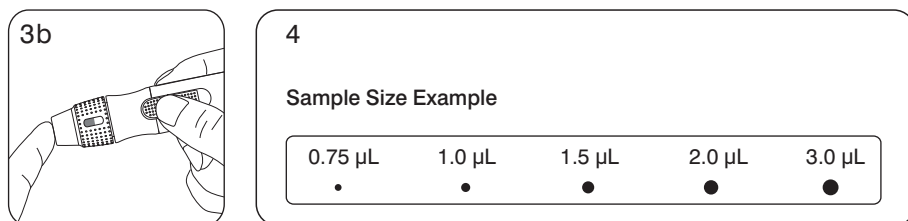


4 > Performing a Test

- 1) Wash and dry your hands. Take one test strip from the vial. Close the vial cap immediately.
- 2) Insert the test strip into the test strip port on the meter with the Viewing Window facing up. Push the test strip in until you hear a click. The meter will automatically calibrate with the strip.
- 3) When you see the flashing blood drop icon on the display window, hold the lancing device to your fingertip and press the release button.

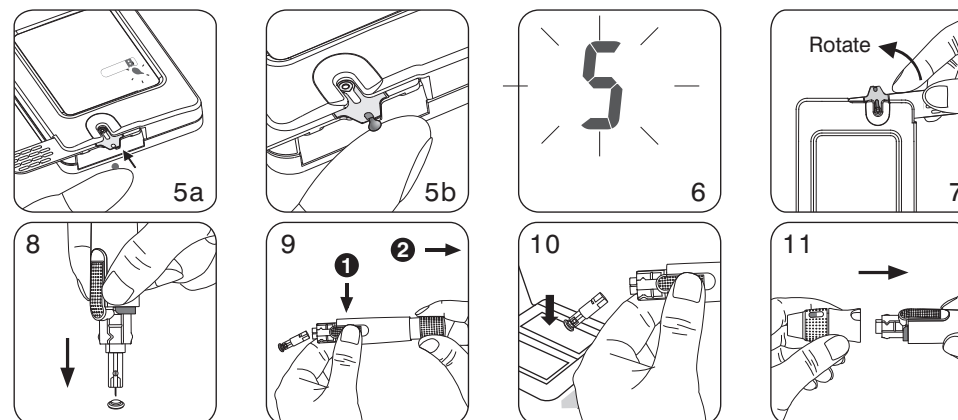


- 4) Use a minimum blood sample volume of 0.75 µL for blood glucose testing. Samples larger than 3.0 µL may contaminate the meter.



- 5) Touch and hold the blood droplet to the test strip sample entry port until you hear a "beep" and the Viewing Window is filled with blood. If the Viewing Window is not completely filled with blood or the test does not start, please discard the test strip and repeat the test with a new test strip.
- 6) You will see a countdown on the screen. After 5 seconds, the test result will appear.

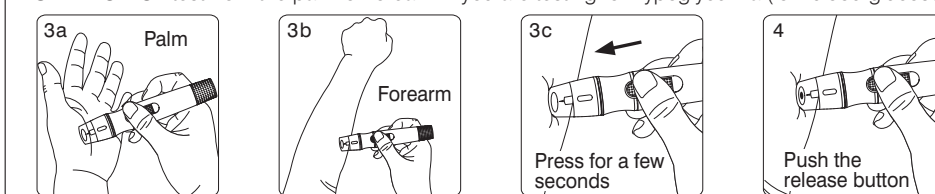
- 7) Remove the test strip from meter. Please follow local regulations and discard the used strip properly.
- 8) Remove the cap from the lancing device. Do not touch the used lancet. Press the lancet tip into the protective cover.
- 9) Hold down the release button and pull back the plunger to eject the lancet.
- 10) Discard the lancet into a suitable sharps biohazard container.
- 11) Reattach the depth adjustable cap after finishing the test.



Alternative site testing: palm or forearm blood sampling

1. Install the clear cap on the lancing device and follow Steps 1 and 2 of "Performing a Test".
2. Massage the target area on the palm or forearm for a few seconds to increase blood flow.
3. Immediately after massaging, press and hold the lancing device against the target area.
4. Press the release button.
5. After pressing the release button, continue holding the lancing device against the skin. Gradually push the device against your skin with increasing pressure until the blood droplet is of sufficient size.
6. Discard the lancet into a suitable sharps biohazard container.

NOTE: DO NOT test from the palm or forearm if you are testing for hypoglycemia (low blood glucose).



NOTE

- The RIGHTEST Lancing Device is intended for single person use only.
- For more information, please see the User's Manual.

BIONIME

BIONIME CORPORATION
No. 100, Sec. 2, Daqing St., South Dist.,
Taichung City 40242, Taiwan
Tel: +886 4 2369 2388
Fax: +886 4 2261 7586
Email: info@bionime.com
http://www.bionime.com



Emergo Europe
Prinsessegracht 20
2514 AP The Hague
The Netherlands
Email: EmergoVigilance@ul.com



0197

Rev. Date: 2021-06

101-3GM11-000
EN